

“Designed to international standards.”

Ranges To Meet All Training Requirements

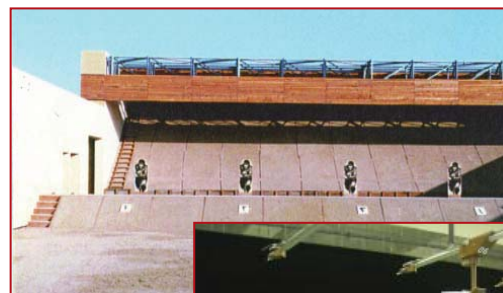
Nitor and AIS have a proven track record as range design consultants and contractors for specialised training facilities involving multi-disciplined and often complex turnkey requirements.

Our team of range designers, architects, project managers and engineers work closely with the end-users to carefully analyse their training needs to reach the final design and deliver an effective training facility.

Our designs include the most advanced specialist range equipment consisting of targetry, simulation, bullet protection, safety/monitoring and access-control systems.

Indoor Range Systems

- Conventional and video simulation systems
- Acoustic and anti-ricochet materials
- Bullet traps
- Ventilation systems
- Control and monitoring systems
- Advanced targetry solutions



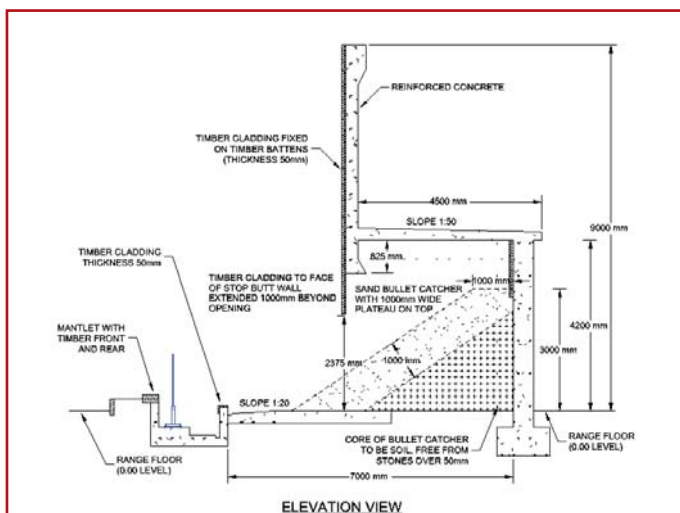
300m outdoor range



Indoor range with retractable targets

Outdoor Range Systems

- Conventional gallery and open ranges
- Baffled ranges
- Targetry and scoring systems
- Control and support buildings



100m indoor range with targetry and simulation systems

Delivering State of the Art Specialist Training Facilities

Nitor and AIS have the capability to design, fabricate, deliver and install bespoke facilities together with simulation and training solutions.

Training Mock-ups

We have designed and constructed full-size mock-ups of aircraft, marine vessels, oil platforms, underground and aboveground stations and train carriages. Our designs incorporate realistic door and window openings and other features to ensure that training is as realistic as possible.

Urban Ranges

From simplistic house and building facades to comprehensive training villages, our urban ranges provide valuable training experiences for Urban Operations, Public Order and Counter-Terrorist training.

Close Quarters Battle (CQB) Houses

We design and build CQB houses for military units and special forces to train and practise close quarters combat tactics and drills using live ammunition. A typical "killing house" consists of several rooms on two or more storeys, linked by corridors, staircases and lifts. The interior is fitted with anti-ricochet walls, ceilings and floors, and soft bullet traps are used for bullet containment.

Specialist Facilities and Training Centres

We have designed and constructed many specialist facilities and complete training camps for training security personnel in counter-terrorist and maritime counter-terrorist techniques.

Examples

- Close Quarters Battle (CQB) houses
- Method of Entry (MOE) buildings
- Maritime counter-terrorist facilities
- Partition ranges
- Sniper training solutions
- Live-fire, full size mock-ups (aircraft, ships, oil rigs, etc.)
- Sniper and commando towers
- Trainasiums and battle skills fitness training solutions
- Live-fire drive-in ranges and driver-training circuits
- Modular live-fire shooting ranges (QuickRange®)

